



# PVS 4150 Portable Samplers

*Easy-to-use, Accurate, Durable, Dependable*

Portable automatic sampling has never been easier, with the SIRCO PVS 4150 sampler. Built with a rugged all-in-one case with handles and wheels, this sampler can be taken nearly anywhere. These samplers are compact, yet maintaining the same, reliable, long-lasting vacuum technology as the stationary samplers which SIRCO is renowned for. The vacuum system of sampling results in accurate and dependable results, even with high sediment content or rapid velocities at the sample source. The PVS 4150 portable model features composite sampling and a programmable controller with 16-key intuitive touchpad.

The PVS 4150 samplers are designed to fit a variety of different locational challenges. A rugged design and precision in construction give these samplers the ability to be set up in one location over time, yet they are easily transportable.

The PVS 4150 portable samplers are enclosed in a heavy duty Hardigg Storm Case complete with telescoping handle and wheels for ease of transport.

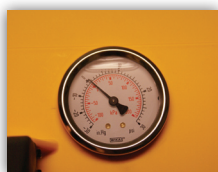
The enclosure is manufactured with Hardigg HPX® high performance resin, easy Press & Pull latches and durable soft-grip handles, They are the most comfortable, toughest transport cases available, designed to handle tough environmental challenges and weathering.



Code	Type
C	Composite
M	Multi Function Input Controller
1	3/8" ID x 250cc Metering Chamber
B	8 Litre (2 US Gallons) Nalgene Container
1	iM2750 Enclosure
B	Vacuum Pressure Gauge
J	12 VDC Battery with Charger

## Features

- Controller housed in an environmentally sealed enclosure for corrosion protection, and all information is easily controlled and viewable on a 2x16 character backlit LCD.
- Rapid transport velocities of samples (over 4.5 ft/ sec for horizontal draw of up to 25 feet and 2.5 ft/ sec for vertical sample lifts of up to 15 ft), meaning more accurate samples, even of solids over long vertical lifts.
- Housing benefits include: Four Press & Pull Latches, Three Double-layered, Soft-grip Handles, Two Padlockable Hasps, In-line Wheels, Telescoping Handle, Vortex® Valve, Flush Powerful Hinges, Lightweight Strong HPX® Resin, Watertight.
- 3/8 inch intake hose, for more accurate samples of particles in the water.
- Three-year warranty.



# SIRCO PVS 4150 PORTABLE SAMPLER

Sampler		Vacuum System	
Height	24.6 inches 625 mm	Pinch Valve	Fixed – normally open
Width	19.7 inches 500 mm	Purge Cycle	Adjustable – 5 to 99 seconds
Depth	14.4 inches 366 mm	Suction cycle	Variable – adjusts automatically to double the input value of the purge time setting or until liquid contacts level electrode in metering chamber
Weight (without battery)	35.5 lbs 16.1 kg	Sample Volume	Adjustable, 50cc to 250cc
Enclosure	HPX high performance resin. Press & pull latches and soft-grip handles	Sample Transport Velocity	<b>Vertical:</b> Minimum 2.5 ft/s at 20ft of lift (3/8" ID intake) <b>Horizontal:</b> minimum 4.5 ft/sec at 75 ft
Supply Voltage	<b>Integral Battery:</b> 12 Vdc, 7 AH (4 lbs) with external charger and cable	Metering Chamber	Acrylic 250cc with reinforced Teflon top 50/100/200 cc calibration
Cooling System	Cavity space for two Zero-Pak (#12396)	Volume Control Tube	316 stainless steel
Controller		Metering Chamber Level	316 stainless steel
Display	2x16 character backlit LCD	Electrode	
Touchpad	16-key, calculator-type with multi-level menus	Intake Hose	Nylon reinforced PVC (3/8" ID by 20' c/w sinker)
Start Delay	Disabled; Time/Day; Pulse Count; 4-20mA (0-100 pulses/minute); External Contact; Level Control	Discharge Hose	Latex, 3/8" ID
Sample Initiation	Disabled; Interval Time; Pulse Count; 4-20mA (0 to 100 pulses/minute); External Contact	Sample Container (composite only)	2.3 US gallon (9 litre) high density polyethylene (Nalgene)
Program Type	Composite; Multi-Composite; Consecutive; Daily Cycle; Timed Step	Pressure Gauge	WIKA vacuum/pressure gauge
Clock	Real Time clock & operating system	Options	
Direct Function Keys	Manual sample; Manual purge; Manual bottle advance; Restart	Extra Battery	12Vdc 7AH (4 lbs)
Switches	Controller "on/off" (SPST toggle)	External Charger	For charging in two locations
Available displays	Real time clock; Process timing; Process totals; Pulse counting; Event response; Multi-level descriptions; Flashing prompts; Diagnostics	<b>Other custom options available upon request</b>	
Automatic displays	Container Full; Fault; Power Interrupt (program resumed); Alternating Time Stamp; Cycle(s) abandoned	<b>Optional extended warranty (up to 5 years)</b>	
Backup Power Source	Internal Lithium battery to maintain program settings & info in the case of power failure	* Optional features are marked with an asterix	

## Specifications

Effluent/liquid sampling unit is to be of the vacuum-type mode of operation, for the collection of liquids at user-specified criteria. Portable unit will have an enclosure of high performance resin or equivalent. Vacuum system is to include a pressure purge before sampling in order to keep system free from contaminants. Control pad will be able to initiate sampling based on user criteria, including but not limited to 4-20mA, interval time, external contact, and manual override. Sampler to be manufactured in Canada or the United States only, and have a three (3) year warranty. Sampling unit to be a PVS 4150 Sirco Sampler manufactured by Southwell, or approved equivalent.

**SIRCO** SAMPLERS

Manufactured by:

**SouthwellCorp**

[www.southwellcorp.com](http://www.southwellcorp.com)

Tel: 604-980-3688

Fax: 604-980-6578

Toll Free: 877-984-7788

[sales@southwellcorp.com](mailto:sales@southwellcorp.com)

[www.sircosamplers.com](http://www.sircosamplers.com)

**USA**

4152 Meridian St. Ste 105 #455  
Bellingham, WA 98226

**Canada**

857 West 3rd St.  
North Vancouver, BC V7P 1E3